



Welcome

JOHN MASON

SUBCAMP 3

CHIEF



Check - In Procedures

- ▣ Enter in the Main Gate
 - Make sure you have
 - ▣ Gov't Photo ID
 - ▣ Vehicle registration
 - ▣ Proof of insurance
 - ▣ If your state has State Inspections Stickers make sure it is current.

Check - In Procedures

- ▣ Proceed to Registration which is at the “Welcome Center”
- Make sure you have with you
 - ▣ Your Health Record
 - ▣ Proof of “Youth Protection Training”
 - ▣ Proof of “2010 National Scout Jamboree Drivers Training” part of the e-learning on myscouting.org

Check - In Procedures

- ▣ Proceed to Sub-Camp
 - You will get your bunk assignment
 - Pay your \$20 staff fee in cash
 - Pick up your pre-order subcamp shirts
 - Pick up your jamboree name tag

- ▣ Proceed to your bunk assignment
 - Unload your car – truck
 - Set up your tent
 - Park your car

Staff Tents

Each tent will house
10 staff members



Staff Tents

There is a florescent light
in the top of every staff
tent

Each tent is wired with
electricity (4 outlets).

There is to be no more
than one extension cord
with one power strip
attached to each outlet.

The tent mates will have
to balance the power .



Connection to the Outside World

The entire Jamboree Site will be wired for Wi-Fi. So if you want to bring your laptops for email you can.

Please , Please keep in mind that you will want to keep them lock up when not in use.



Connection to the Outside World

ATT will be providing charging stations through out the jamboree for cell phones.



Staff Well Being

Meals

Breakfast
Served in the Subcamp

Lunch
Served off the Kiosks

Dinner
Served in the Subcamp

\$20 Staff fee to be paid in
cash at check in at the
sub-camp.



Staff Well Being

Laundry

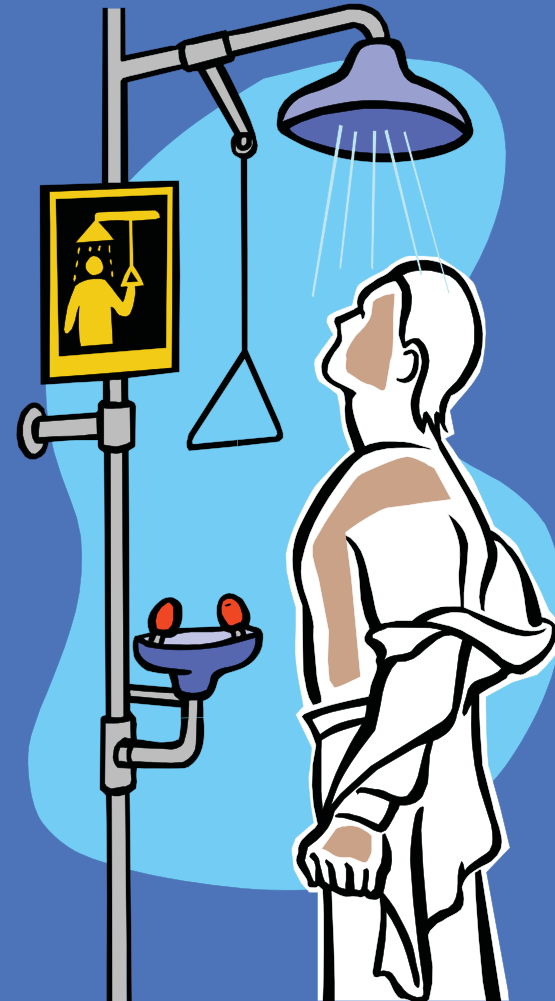
There will be a couple washing machines available in the subcamp or on your days off you can go into town and do laundry.



Staff Well Being

Showers & Toilets

We will be bringing in
Trailers with Showers
and Toilets facilities for
the Staff



Staff Well Being

Transportation

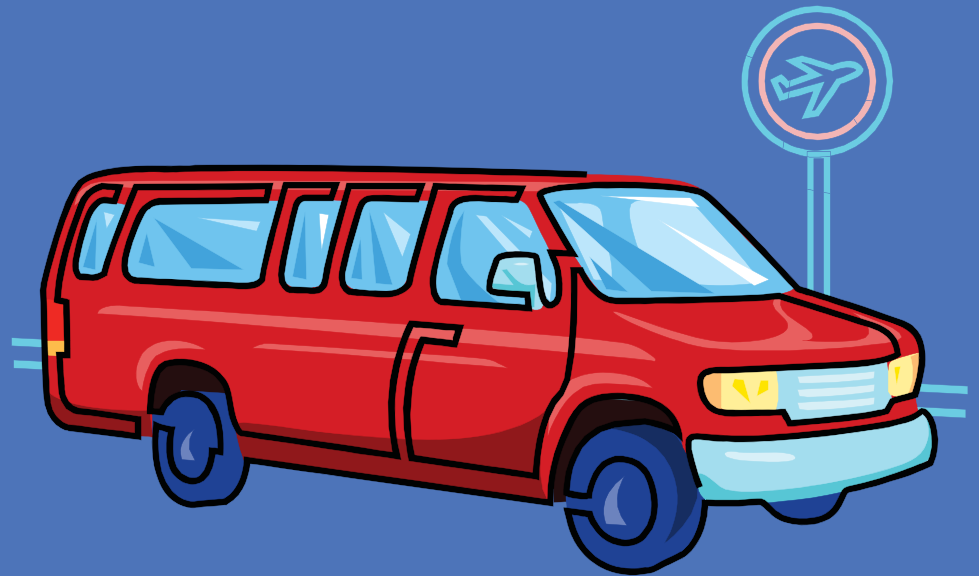
Anyone driving on Post has to have a taken and pass the Drivers Training Course.

There will be 3 vehicles for the subcamp.

One pickup

Two cars

Buses for staff transportation



Staff Well Being

Transportation

Personal Vehicles

Will be given a sticker at check in. They will allow the cars to be driven on the exterior roads up until Noon Sunday the 25th. Cars will not be allowed into the SubCamps until 11:00 am Wednesday August 4th.



Questions



